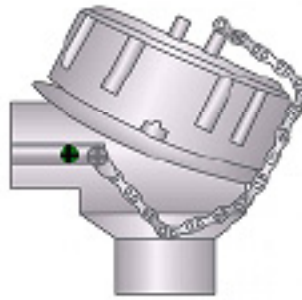




# HEAT TRACE RTD'S



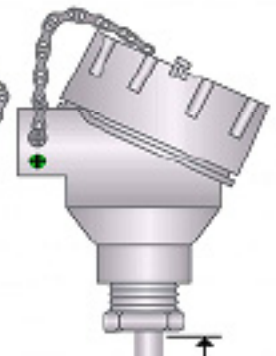
Strap it to a pipe with a pipe clamp!



FM & FMC  
CERTIFICATION



ATEX  
CERTIFICATION



4'-1/2"

NAME:

## ELEMENT TYPE

- 100  $\Omega$  Mineral Insulated 500degC
- 100  $\Omega$  Mineral Insulated 800degC

## WIRE CONFIGURATION

- 2-wire  4-wire  3-wire
- 3-wire  2-wire (Dual) (Dual)

## SHEATH CONFIGURATION

- 3" X 4.25" (90° Bend)

## TRANSMITTER

- None
- 4-20mA Transmitter (non-insulated)
- 4-20mA Transmitter (Isolated)

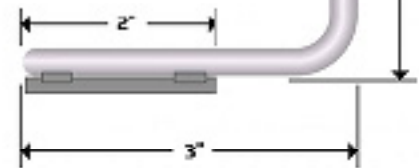
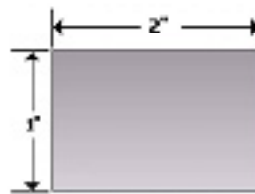
## TRANSMITTER RANGE

Range:

Temp Units:

## REQUIRED LEAD TIME

- 1.5-2 weeks (standard)
- 1 week expedited mfg
- 3-4 days expedited mfg
- 1-2 days expedite mfg
- Same day expedited mfg



## CONNECTION HEAD STYLE



## SHEATH DIAMETER

- 0.118" (3mm)
- 0.125" (3.2mm) (1/8")
- 0.156" (4mm)
- 0.188" (4.8mm) (3/16") (standard)
- 0.196" (5mm)
- 0.236" (6mm)
- 0.250" (6.4mm) (1/4")
- 0.314" (8mm) (5/16")
- 0.375" (9.5mm) (3/8")
- Custom

## HEAD MOUNTING FITTING ( FITTINGS SILVER SOLDERED (BRAZED) TO SHEATH)

- 1/2" npt single thread bushing (no process thread)

## QUANTITY