



SPECIFICATIONS

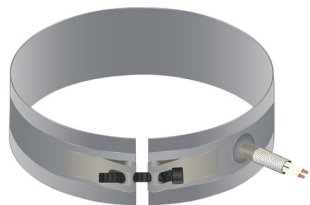
Sheath Material	Stainless Steel				
Maximum Sheath Temperatures	1200°F/650°C				
Profile	3/16"				
Inner Diameter	1" – 11-1/4"				
Width	1" – 6"				
Wattage	400-3,750				
Wattage Density	25 – 68 W/in ²				
Voltage Options	120	230	240	460	480

FEATURES

- Stainless Steel Sheath
- High Temperature Capability (up to 1200°F/650°C)
- High Watt Density Capability (up to 100 W/in²)
- Thin Profile (only 3/16") Allows for Advanced Heat Transfer
- Rugged Construction
- Safety Features (overheat protection and thermal cutoffs)

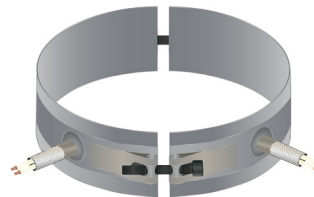
CONSTRUCTION

ONE-PIECE HEATER











One-piece construction is used when the band heater can be installed on a barrel without extensively expanding it. This construction features a built-in strap. They are most often used in applications where the band can be slipped over the end of the cylinder. one-piece construction band heaters are available with any clamping options or any lead termination

TWO PIECE HEATER



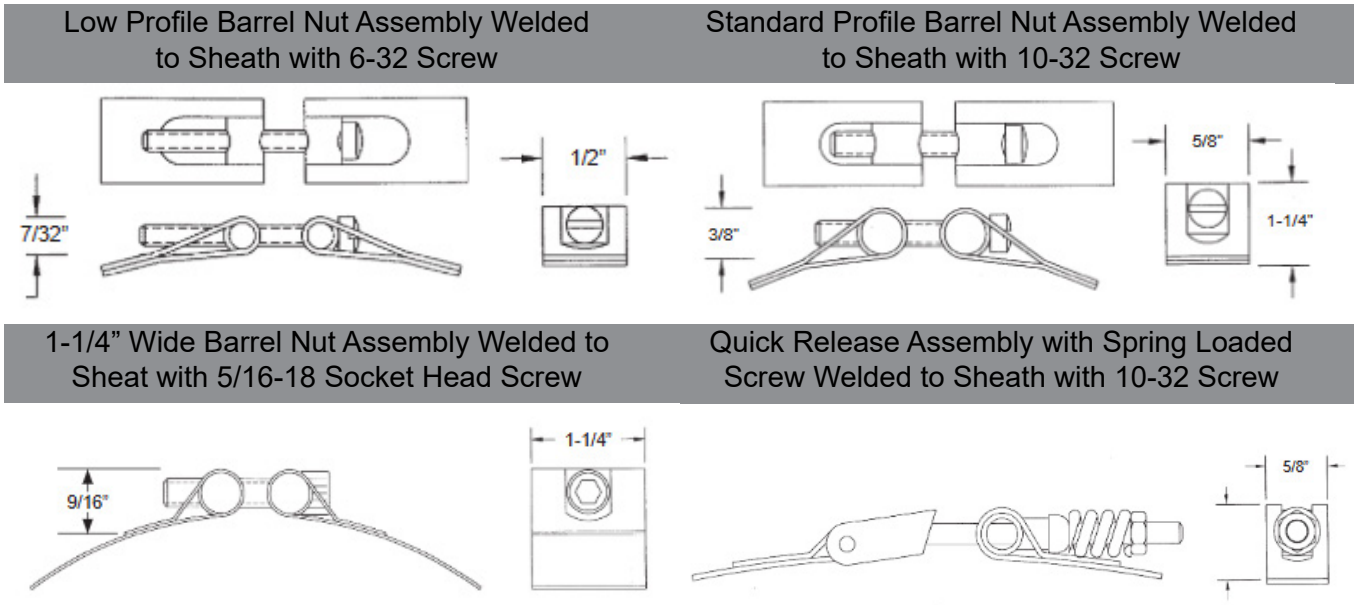
Two-piece construction band heaters provide a built-in hinge to make installation easier for applications where the band heater cannot be slipped over the end of the cylinder. They are often used on larger diameter barrels. Two-piece construction band heaters are available with any clamping options or any lead termination

TERMINATION

POST TERMINALS WITH TERMINAL BOX	POST TERMINAL STYLE 1	POST TERMINAL STYLE 2	STAINLESS STEEL BRAID
			
STAINLESS STEEL ARMOR	EURO PLUG STYLE 1	EURO PLUG STYLE 2	EURO PLUG STYLE 3
			

CUSTOM LEAD WIRE AND CABLE LENGTH OPTIONS AVAILABLE!

HOLE SPECIFICATION



Quick Release Barrel Nut Assembly Welded to Sheath with 1/4-20 Bolt

