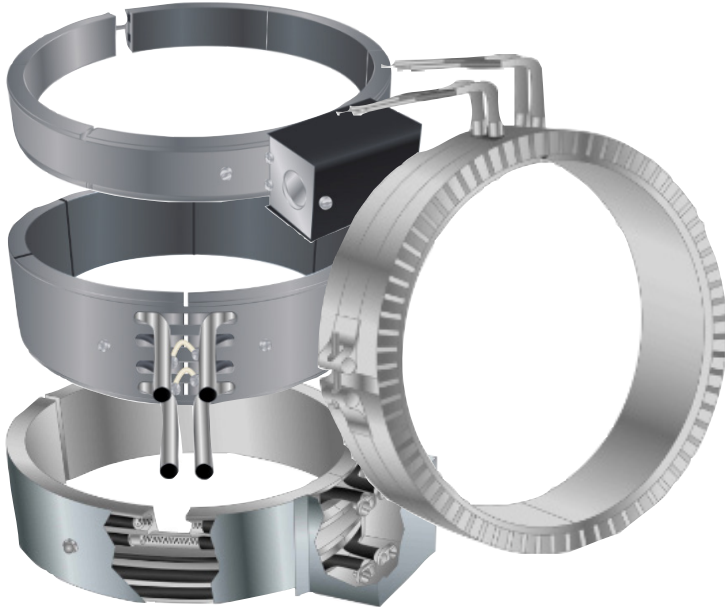




# ALUMINUM BAND HEATERS



## SPECIFICATIONS

MAX VOLTAGE:	<b>277 Volts /Half</b>
MAX AMPS:	<b>30 Amps</b>
MAX WATT DENSITY (RECCOMENDED):	<b>40 Watts / in<sup>2</sup></b>
MAX DIAMETER	<b>10 ft</b>
MAX OPERATING TEMPERATURE:	<b>650 °F</b>
WATTAGE TOLERANCE:	<b>+5%, -10%</b>

## APPLICATIONS

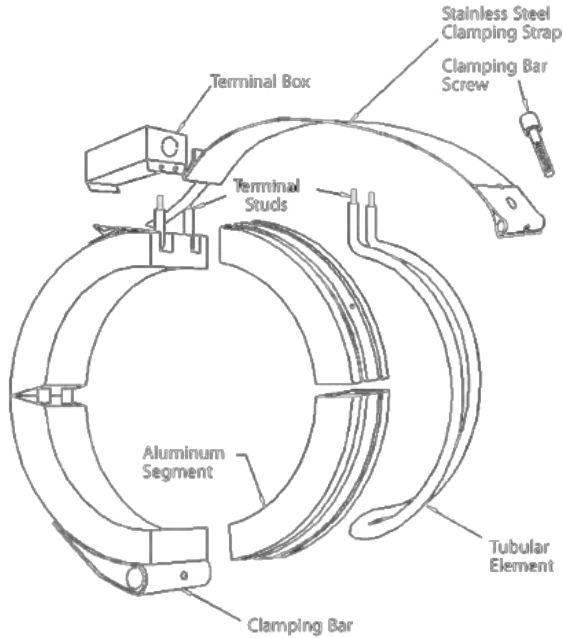
MPI Morheat Starflex band heaters are designed for use in barrel heating of extrusion and injection molding machinery, blown film dies and other cylindrical surfaces. Their configuration can be full for 360° coverage or any degree of partial wrap. Internal bands to heat from the inside-out are also available.

Some applications require both heating and cooling. With the advent of exothermic materials and heat generated by screw rotation, the proven MPI Morheat Starflex band heater was adapted to provide both heating and cooling functions. Cooling tubes are placed in proximity to the heating elements to produce the MPI Morheat Starflex Heat/Cool band. Due to its low mass, it can be

## FEATURES

Starflex Heater Width	Minimum Diameter	Cooling Only Option	Heat/Cool Option	Optional TC Hole Size
.75"	3.50"	Yes	No	N/A
1.50"	3.50"	Yes	No	.37"
2.50"	5	No	No	.50"
3"	5	Yes	Yes	.50"
4"	5	Yes	Yes	.50"

**CONSTRUCTION**



Aluminum Band heaters are manufactured by hydraulically pressing a high temperature heating element into a precision grooved aluminum channel. The heaters are clamped in place with low expansion stainless steel straps for intimate contact with the part. The aluminum channel offers low mass and high thermal conductivity for fast heat up. These same characteristics provide excellent cool down properties as well, which is why Starflex bands are also available with water cooling, both as a cool only band and a heat/cool band.

**TERMINATIONS**

Leads	Screw Terminations	Terminal Box

**OPTIONS**

ID Heaters	Terminal Box	Heat/Cool Bands	Cool Only Bands