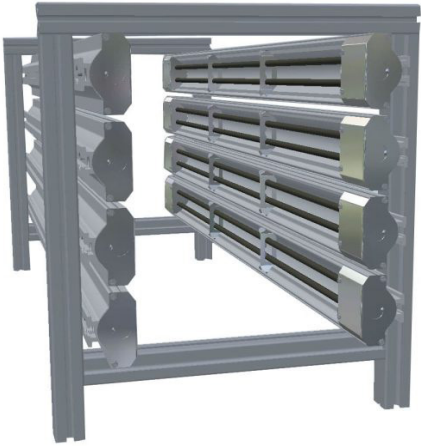




# TUBULAR RADIANT HEATER



## FEATURES

- SIZES – 3/8" STANDARD DIAMETER
- INCOLOY SHEATH ELEMENTS
- SCREW TERMINALS
- MEDIUM-LARGE WAVELENGTH (2.5-8 MICRON)
- OPERATING TEMP: 1650°F
- LENGTHS: 4" TO 175"

## INFORMATION / CONSTRUCTION

Fully assembled and ready for immediate connection, with a variety of length options to suit different work environments. Adjustable mounting clamps and bolts, allowing for flexible installation in areas such as banks, tunnels, and oven sections. Allows for modular arrangements and assemblies specified for your exact purposes. Temperature regulation for the radiant heater is achievable using SCR controllers, percentage timing inputs, and non-contact temperature sensors.

For additional sizes and ratings, contact MPI for pricing and availability.

Designed with an alloy-sheathed tubular heating element, fully enclosed and supported by secondary insulation to ensure superior electrical safety. Built for durability, it offers greater impact resistance compared to quartz lamps, tubes, and open coil designs. The heating element is housed in a robust extruded aluminum casing, providing excellent protection in demanding industrial environments. Polished aluminum reflectors maximize heat transfer and reflectivity, and are easy to clean, helping to maintain optimal energy efficiency.