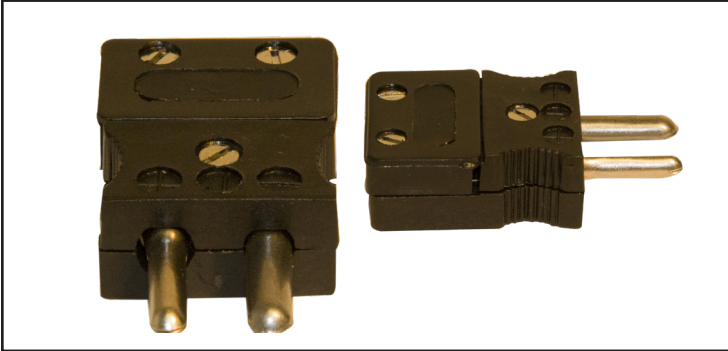
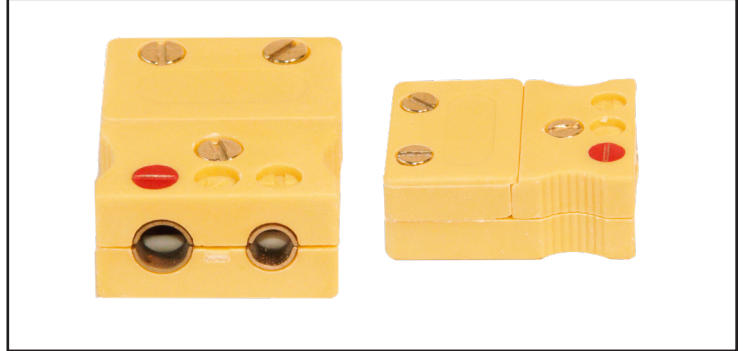


STANDARD CONNECTORS

STANDARD MALE PLUG - BAKELITE



STANDARD FEMALE PLUG - BAKELITE



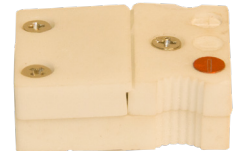
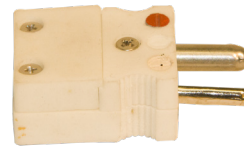
STANDARD CONNECTOR - ORDER CODE

HX 0 X X

MATERIAL	TYPE	MATERIAL
1 - MALE	J - TYPE J	<blank> - BAKELITE (150°C)
2 - FEMALE	K - TYPE K	C - CERAMIC (600°F)
	T - TYPET	

STANDARD CERAMIC
PLUG (600°F)

STANDARD CERAMIC
JACK (600°F)

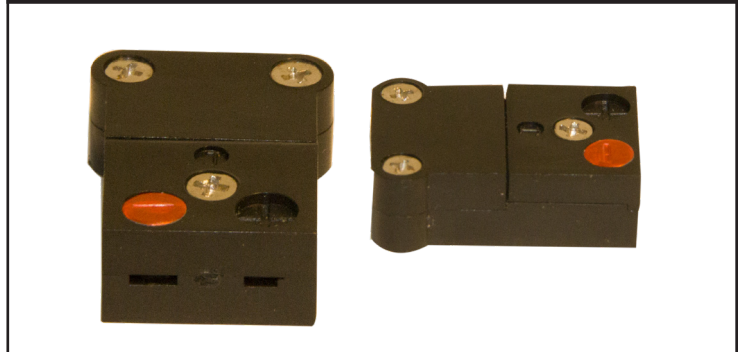


MINI CONNECTORS

MINI MALE PLUG - BAKELITE



MINI FEMALE PLUG - BAKELITE



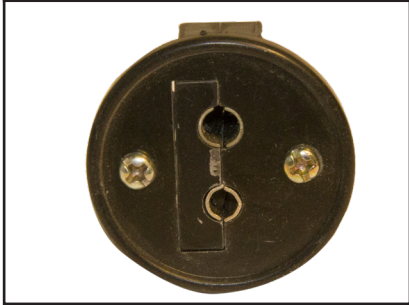
MINI CONNECTOR - ORDER CODE

H1X 0 X X

MATERIAL	TYPE	MATERIAL
1 - MALE	J - TYPE J	<blank> - BAKELITE (150°C)
2 - FEMALE	K - TYPE K	C - CERAMIC (600°F)
	T - TYPET	

PANEL JACKS

SINGLE PANEL JACK



MULTI PANEL JACK - 6 CIRCUIT



SINGLE PANEL JACK - ORDER CODE

H32X

- TYPE**
 J - TYPE J
 K - TYPE K
 T - TYPE T

MULTI PANEL JACK - ORDER CODE

H1032X - X

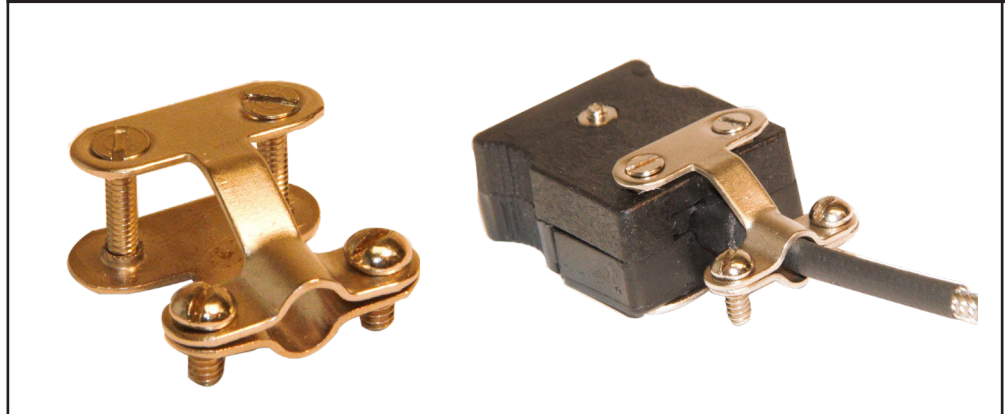
- | TYPE | NUMBER OF CIRCUITS |
|-------------|---------------------------|
| J - TYPE J | 2 - 2 CIRCUITS |
| K - TYPE K | 3 - 2 CIRCUITS |
| T - TYPE T | ... |
| | 12 - 12 CIRCUITS |

CABLE CLAMP

CABLE CLAMP

Strain is shifted from the connection point to the cable clamp. This increases the longevity of the sensor

THERMOCOUPLE PLUG CABLE CLAMP



CABLE CLAMP - ORDER CODE

H40 - STANDARD CONNECTOR