

TEMPERATURE TRANSMITTER HEAD MOUNT



STANDARD

INPUT - THERMOCOUPLE J, K, T, N
- PT100

OUTPUT - 4-20mA

0.1% ACCURACY

ZERO & SPAN POTENTIOMETERS

FITS STANDARD T/C HEAD

LOW PROFILE - 0.67" (17mm)

OPTION

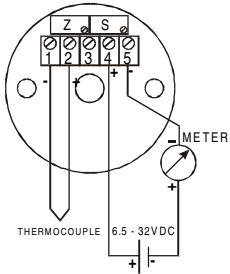
INTRINSICALLY SAFE

FM APPROVAL

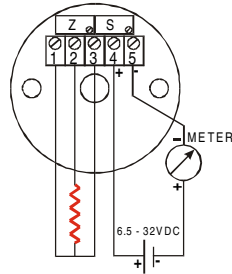
CENELEC APPROVAL

SENSOR	SPAN RANGE (°F)	SPAN RANGE (°C)
T/C - J	335-1566°F	186-870°C
T/C - K	443-2218°F	246-1232°C
T/C - T	383-720°F	213-400°C
T/C - N	574-2340°F	574-1300°C
Pt100	100-1000°F	50-500°C
ZERO RANGE	-60 to +120°F	-50 to +50°C

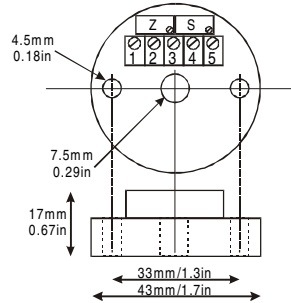
**THERMOCOUPLE
ELECTRICAL
CONNECTION**



**Pt100 RTD SENSOR
ELECTRICAL
CONNECTION**



**DIMENSIONAL
DRAWING**



MODEL CODE

MPTR - **INPUT** - **SCALE** - **ERROR** - **RATING**

J
K
T
N
Pt100

ie. 0-500°F

U - UP (25mA)
L - DOWN(3mA)

N - NONE
I - INTRINSIC SAFE
FM - Class 1, Div.1
Gr.A-D

SPECIFICATIONS - MPTR

1. INPUT

Thermocouple	J, K, T, N
RTD	Pt100 ohms RTD (DIN / JIS)
Range	10-50mV
Accuracy	0.1% of SPAN
CJC Comp Temp Influence	+/-0.6% / 25°C
Zero Range	-50 to +50°C

3. ENVIRONMENTAL

Operating Temp.	-40 - 85°C / -40 - 185°F
Humidity	0 - 95% non Condensing
Rating	IP20
Weight	40g

2. OUTPUT

Output	4-20mA
Temp Stability	+/-0.7% of SPAN / 25oC (50oF)
Response (10-90%)	<0.2s
Long Term Stability	0.1% / YR
Permissible Load	620ohm @ 24VDC
Sensor Break Action	High(25mA) or Low(3mA)

4. POWER

Rating	6.5 - 32VDC
--------	-------------