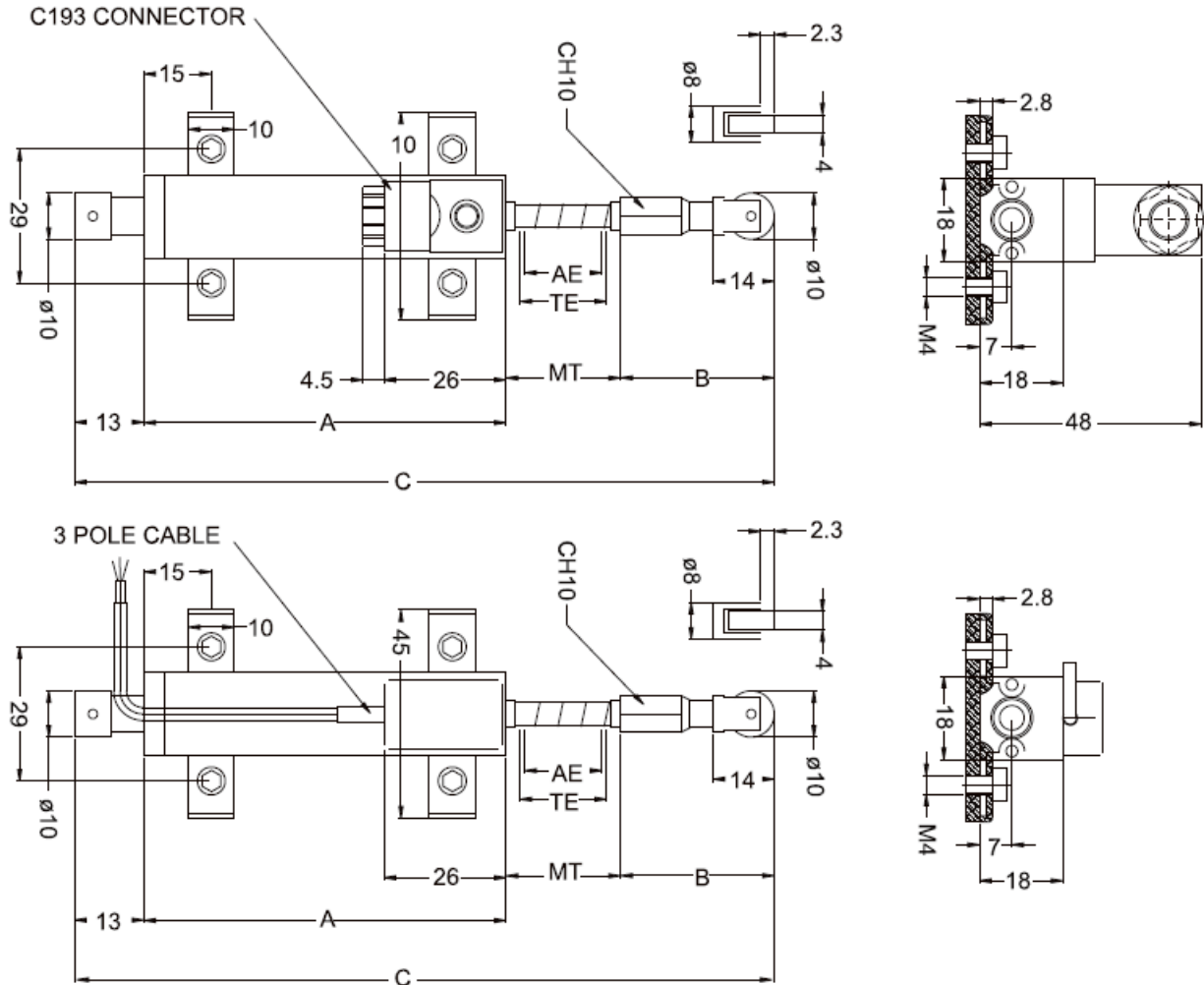
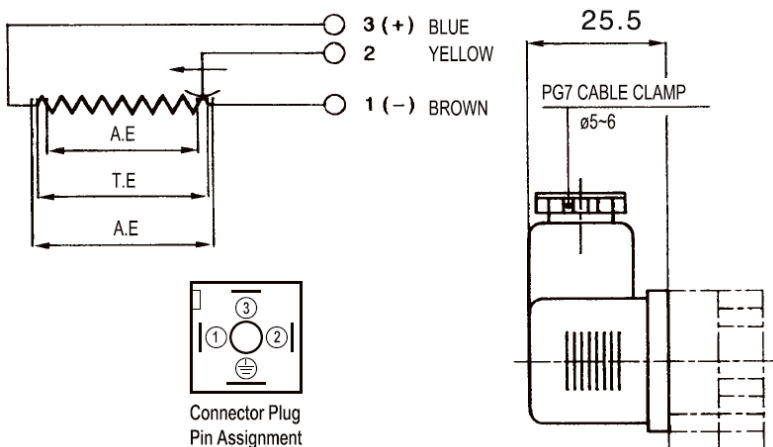


MLY3 - 18mm \varnothing ROD STYLE - SPRING LOADED ROLLER TIP

DIMENSIONS



ELECTRICAL CONNECTIONS



SPECIFICATIONS

LINEARITY	0.05%
MAX VOLTAGE	60V
PROTECTION	IP40 (Option - IP65)
INSULATION RESISTANCE	>500V
MAX DISPLACE SPEED	5m/s
LIFE	>100x10 ⁶ Cycles
CASE MATERIAL	Anodized Aluminium, Nylon
CONTROL ROD	Stainless Steel
RESISTANCE ELEMENT	Conductive Plastic
MECH MOUNTING	Variable Length Brackets