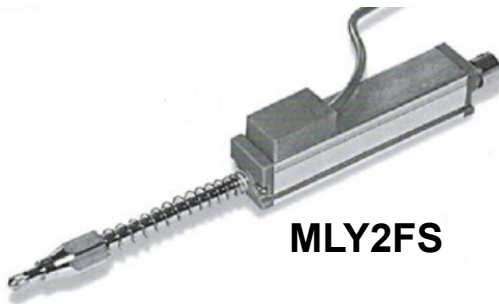
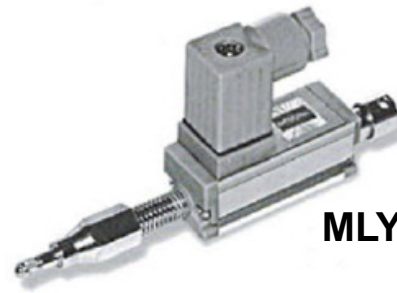


## MLY2 - 18mm ø ROD STYLE - SPRING LOADED BALL TIP

## MLY2 - 18mm ø ROD STYLE - SPRING LOADED BALL TIP



**MLY2FS**



**MLY2C**

### DESCRIPTION

The MLY2 series linear transducers are compact and are suitable for installation in small spaces in order to detect small shifts. The side connection creates a through-rod structure with double rod support, giving this transducer greater overall strength and durability. The return spring automatically returns the rod to the zero position, making the transducer ideal for comparator applications. The stainless steel ball tip is suitable for applications where the object to be measured is not subject to shifts traverse to the transducer axle. This linear transducer is ideal for checking the flatness or thickness of panels of various materials. It can also be used for valves or mechanical parts when the rod cannot be attached to the moving object.

### STANDARD FEATURES

10, 25, 50mm STROKE  
 OUTPUT - 1kOHM, 5kOHM (50mm)  
 LINEARITY +/-0.1%  
 INFINITE RESOLUTION  
 CONNECTOR - 4 PIN, CABLE  
 DISPLACEMENT SPEED - 5m/s  
 MECHANICAL LINKAGE - M8  
 OPERATING TEMP - -30 to +100OC  
 IP40

### OPTIONS

CONNECTORS - 3,5 PIN  
 IP65

### MECHANICAL/ELECTRICAL DATA

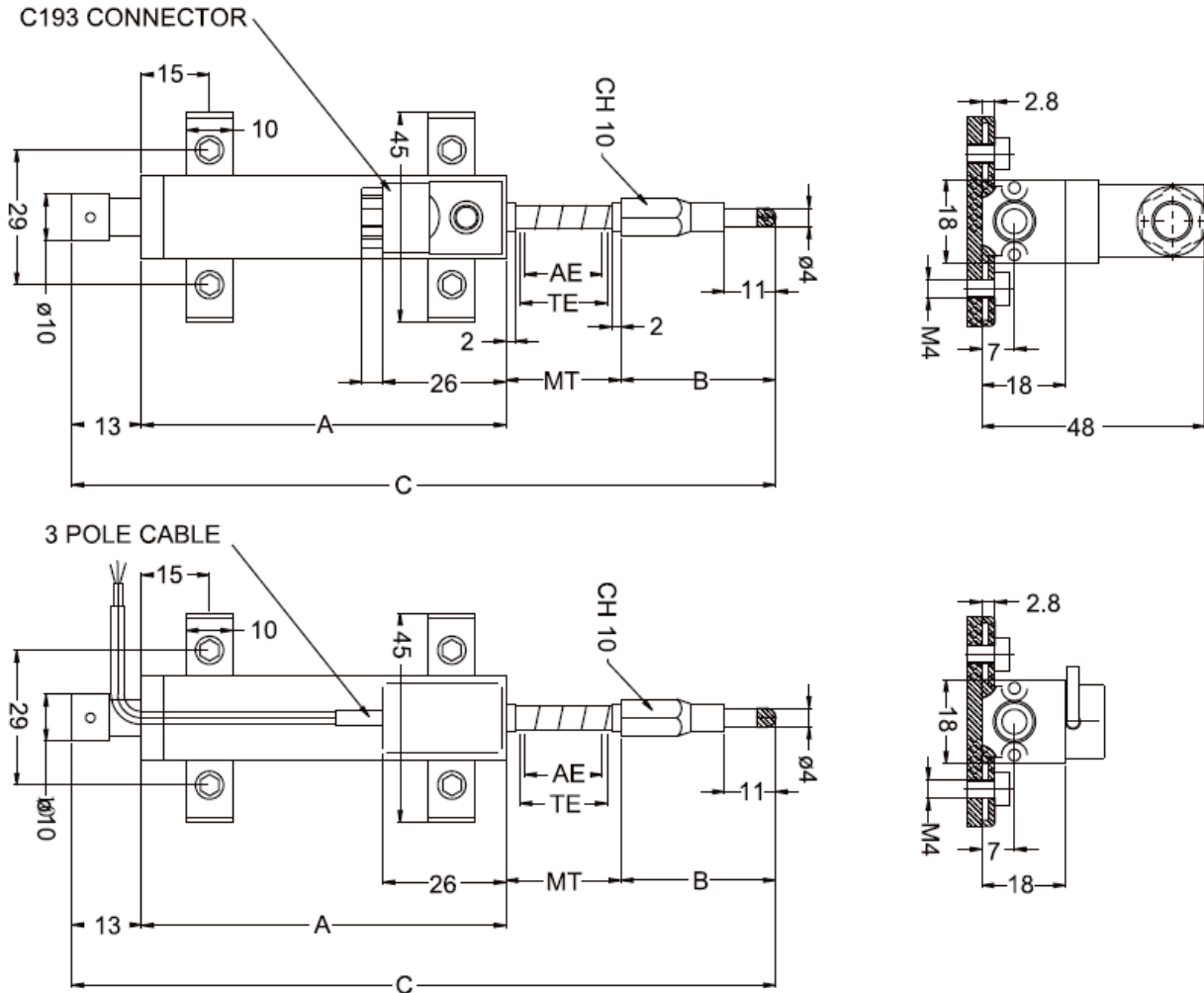
MODEL		10	25	50	100
TOTAL ELECTRICAL TRAVEL	mm	11	26	51	100
ACTIVE ELECTRICAL TRAVEL	mm	10	25	50	101
RESISTANCE .20%	k	1	1	5	5
INDEPENDENT LINEARITY	.%	0.3	0.2	0.1	0.05
MECHANICAL TRAVEL	mm	15	30	55	105
RESOLUTION		Infinite			
RECOMMENDED CURSOR CURRENT	A	<1			
TEMPERATURE RANGE	°C	-30°C to 100°C (-22°F to 212°F)			
DIMENSIONS (A)	mm	48	63	88	138
DIMENSIONS (B)	mm	32	32	40	90
DIMENSIONS (C)	mm	108	138	196	246

### MLY2 - ORDER CODE

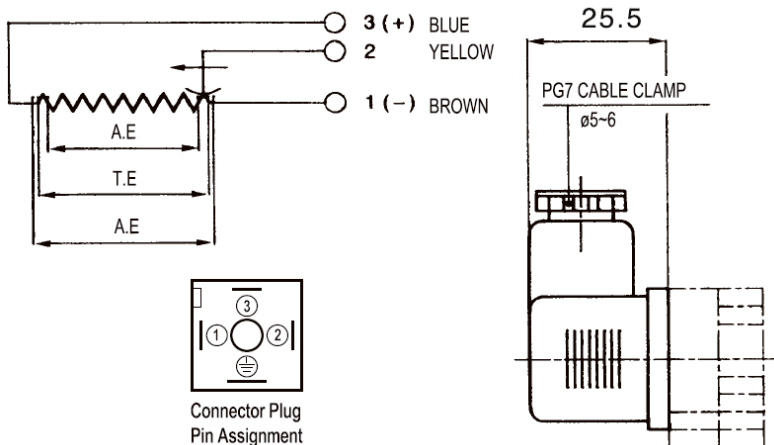
**MLY2X(X)** - **XX(X)** - **X**  
**ELECTRICAL CONNECTION** Length mm(Inch) **SEAL**  
**C** - 4Pin See Table Above **<blank>** - IP40  
**FS** - 1M Cable **P** - IP65

## MLY2 - 18mm $\phi$ ROD STYLE - SPRING LOADED BALL TIP

### DIMENSIONS



### ELECTRICAL CONNECTIONS



### SPECIFICATIONS

LINEARITY	0.05%
MAX VOLTAGE	60V
PROTECTION	IP40 (Option - IP65)
INSULATION RESISTANCE	>500V
MAX DISPLACE SPEED	5m/s
LIFE	>100x10 <sup>6</sup> Cycles
CASE MATERIAL	Anodized Aluminium, Nylon
CONTROL ROD	Stainless Steel
RESISTANCE ELEMENT	Conductive Plastic
MECH MOUNTING	Variable Length Brackets